

Ensemble Theatre Cincinnati Social Narrative

A Guide to Visiting Ensemble Theatre Cincinnati



**ENSEMBLE
THEATRE
CINCINNATI**

Ensemble Theatre Cincinnati opened in 1986.

The theatre is located downtown Cincinnati, in Over-the-Rhine.

I am going to the Ensemble Theatre Cincinnati to see a show.

I can look on the website at www.ensemblecincinnati.org to find out more information about Ensemble Theatre Cincinnati.



**ENSEMBLE
THEATRE
CINCINNATI**

Outside View of Ensemble Theatre



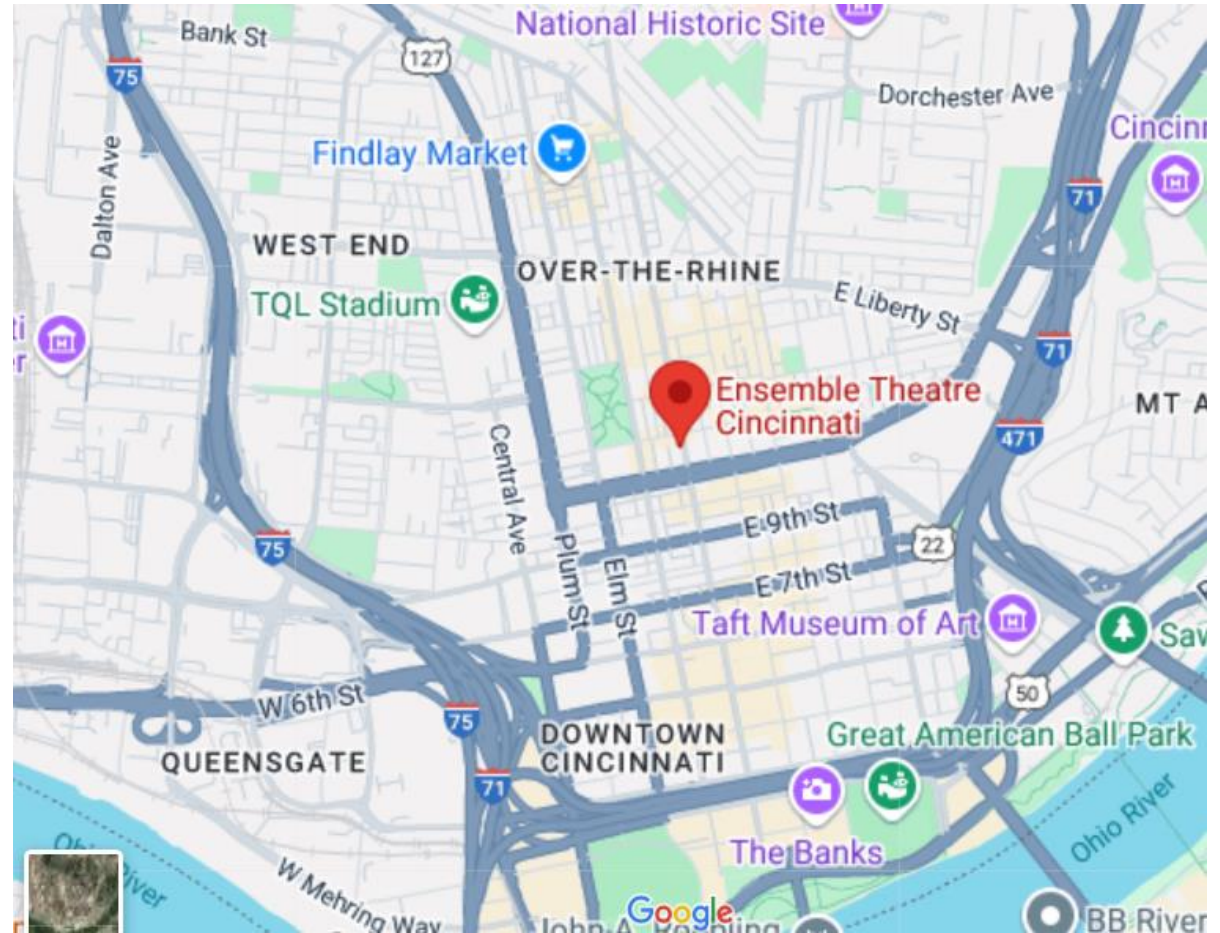
Parking options can vary, as well as pricing for each garage or surface lot. Here are just a few options.

12th and Vine surface lot – at the NE corner of 12th and Vine Streets. Entrance/exits on 12th and Jackson Streets. This is a three-minute walk to Ensemble Theatre Cincinnati.

Gateway Garage – On the SE corner of 12th and Vine Streets. Visitor parking is from 5 pm – 3 am Mon-Fri, and all day/night Sat and Sun. Daytime weekday parking is monthly parking only. This is a two-minute walk to Ensemble Theatre Cincinnati.

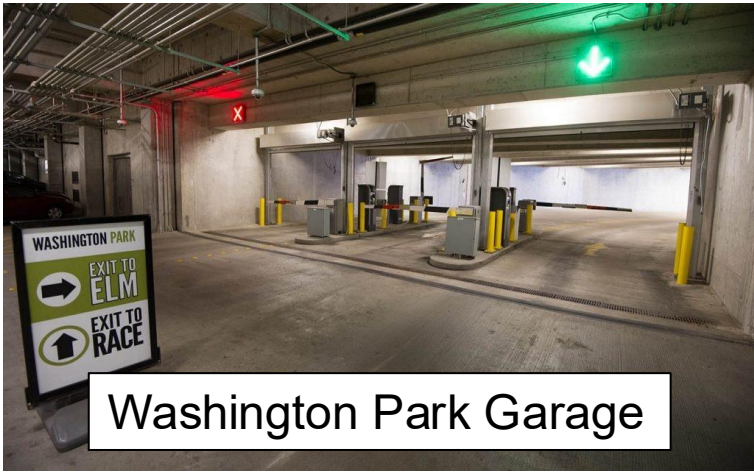
Mercer Commons Garage – Entry on Vine Street between 13th and 14th streets. Vehicles exit to Mercer Street. This is a four-minute walk to the theatre.

Washington Park Garage – Located beneath the northern end of the park. Entrances/exits on Race Street at 13th Street and on Elm Street across from Music Hall. This is a five-minute walk to Ensemble Theatre Cincinnati.



**ENSEMBLE
THEATRE
CINCINNATI**

Accessible parking is limited to first-come, first-served, and is located in front of the theatre's main entrance at 1127 Vine Street.

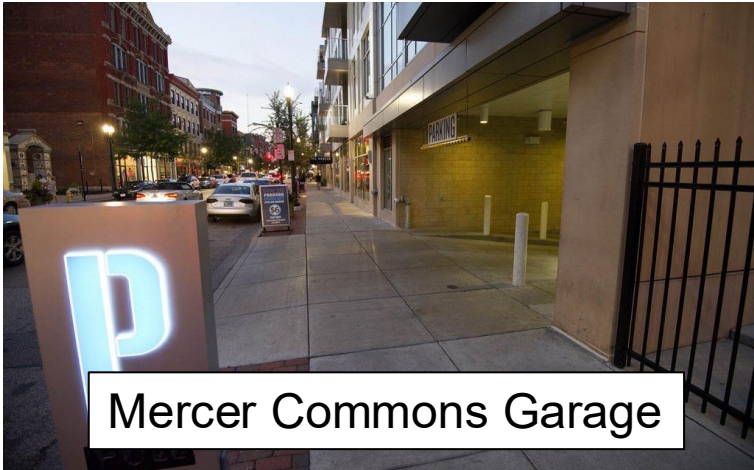


Washington Park Garage



Main Front 12th and Vine St Surface Lot

These are pictures of the garages mentioned on the previous page.



Mercer Commons Garage



Gateway Garage

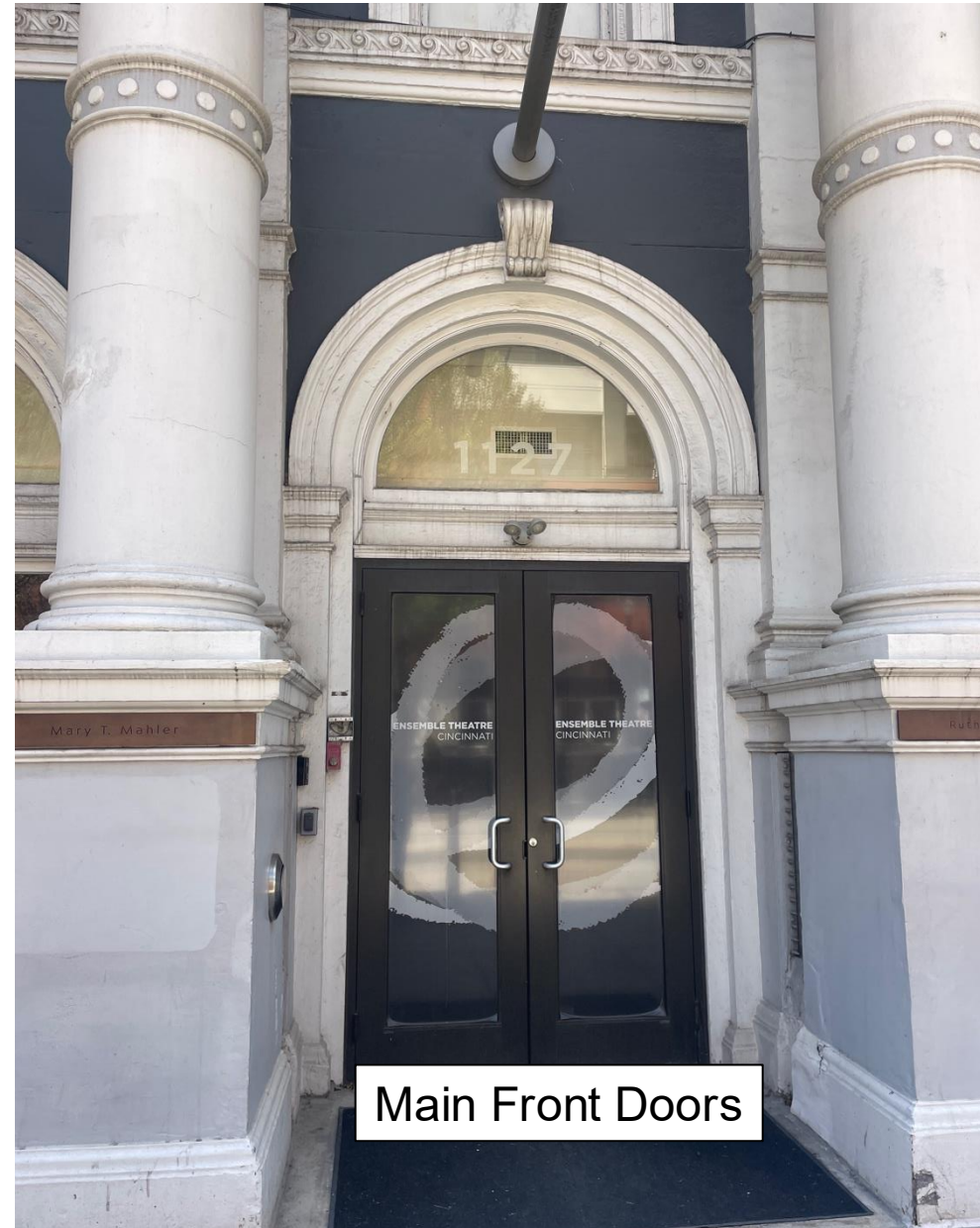


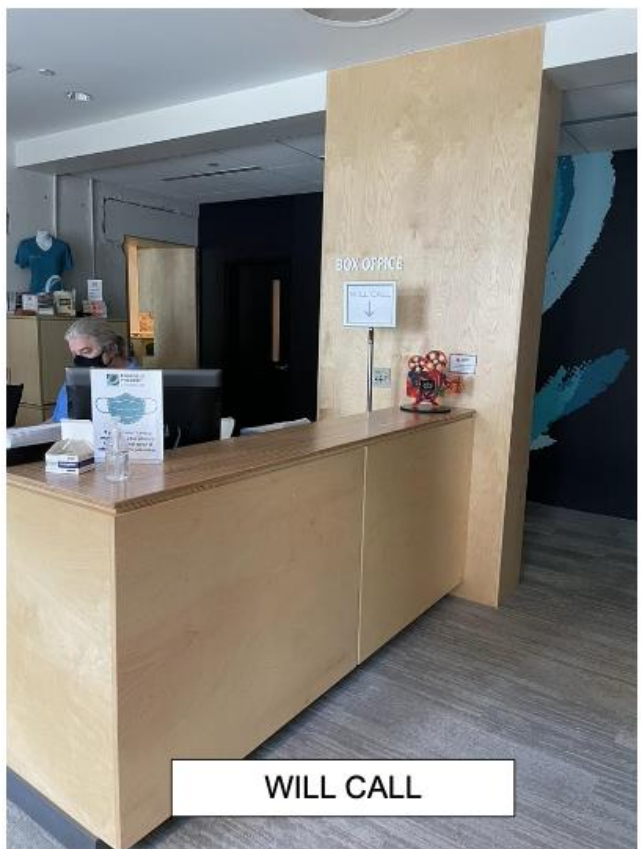
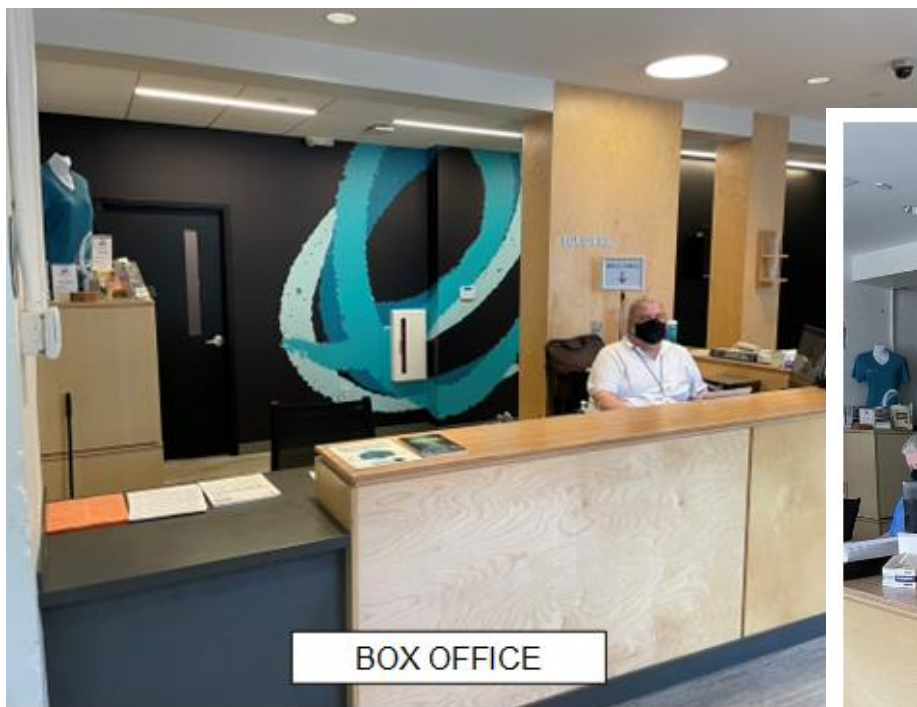
When we arrive to Ensemble Theatre Cincinnati, I will enter through the main set of doors. The main set of doors are between two white pillars.

If it makes me comfortable, I can wear my mask while I am here, but it is not required.



**ENSEMBLE
THEATRE
CINCINNATI**





When I walk into the lobby, I will see the Box Office.

I will stop at the box office to pick up my tickets from will call.

I will also receive an email and text message with my tickets. I can use this if I don't want to stop at the box office.

If I need them, there are assistive listening devices, large print programs, and braille programs available here. I can ask one of the box office associates for one.



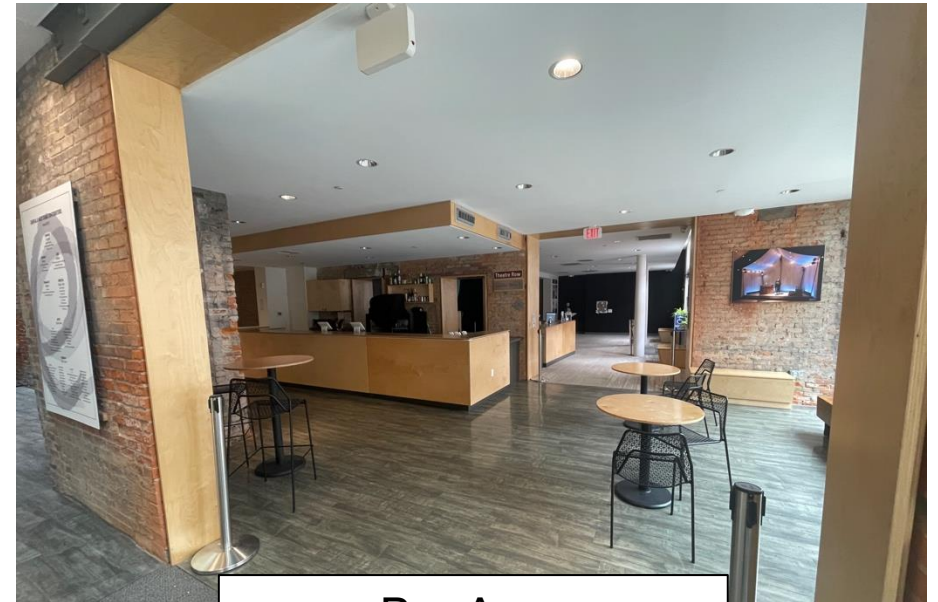
**ENSEMBLE
THEATRE
CINCINNATI**

I will wait in the lobby until it is time to see the play.

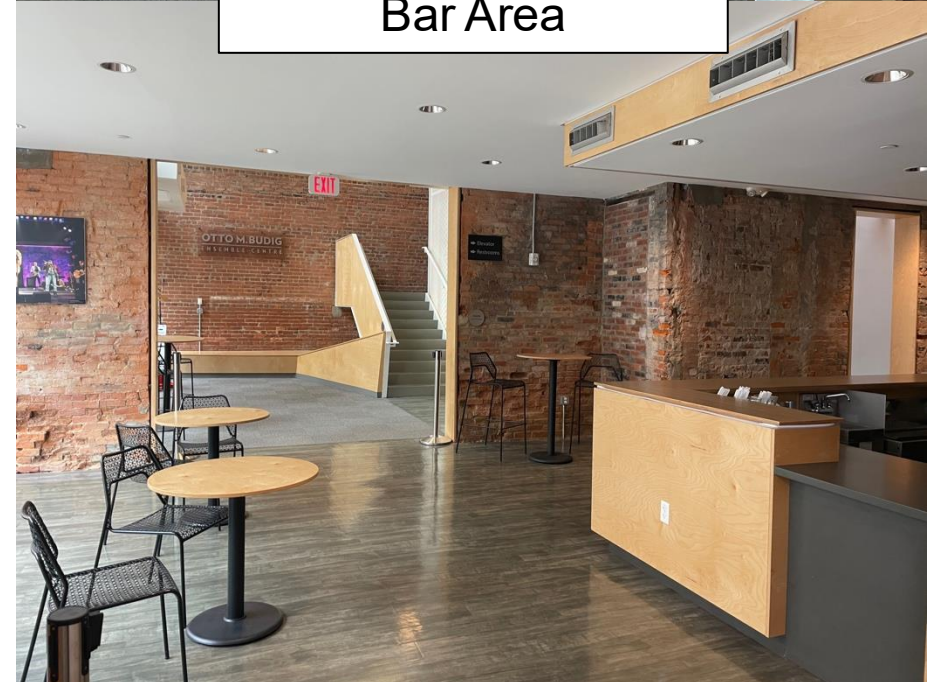
There are chairs and tables I can sit at to wait. The bar will also be open for me to buy snacks or drinks while I wait. I can bring these items into the theatre when it is time for the play.



**ENSEMBLE
THEATRE
CINCINNATI**



Bar Area





STAIRS

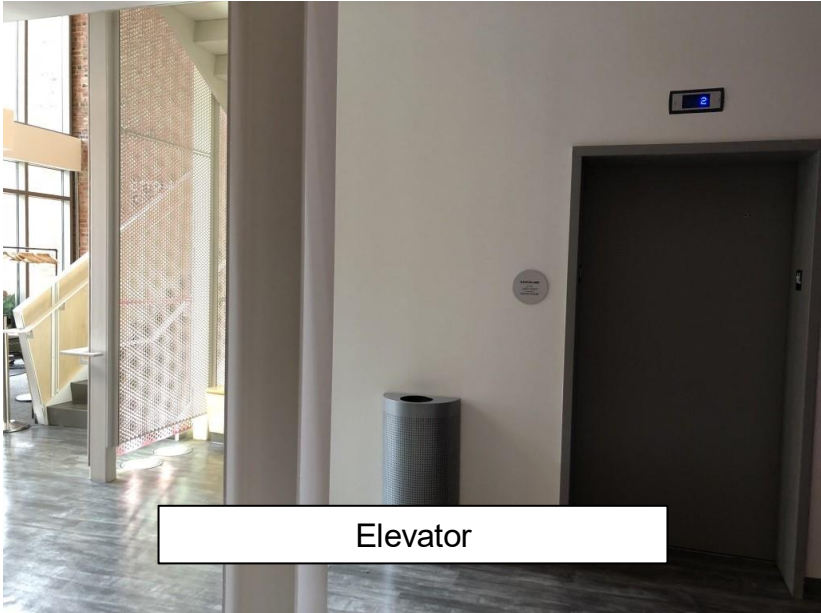
There are stairs in the lobby that go to the second and third floors.

There are restrooms on the first floor down the hall from the stairs. There is a water fountain next to these restrooms.

Also in the hallway on the first floor, there is an elevator. I can ride the elevator up to the third floor.



First Floor Restrooms



Elevator

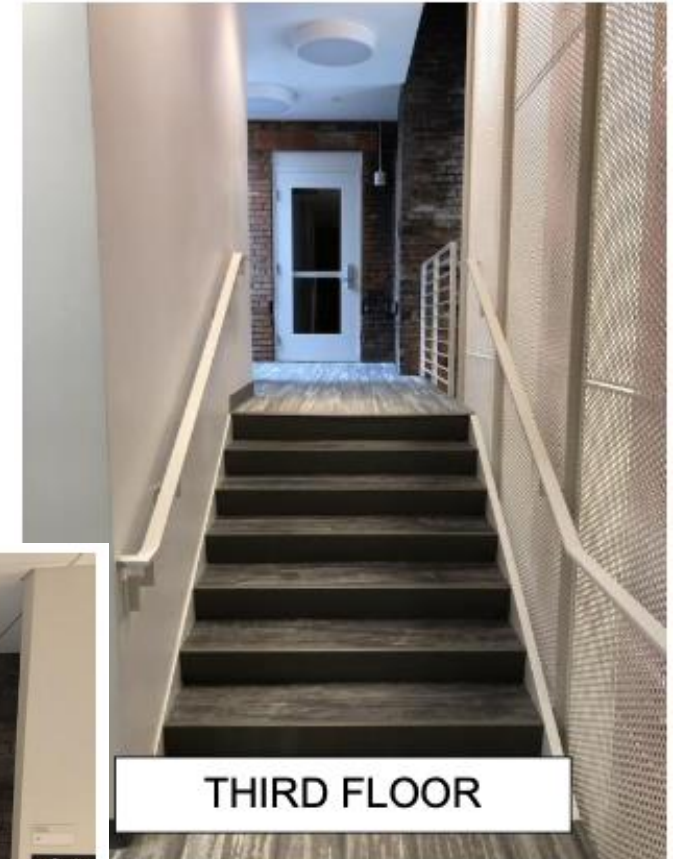


**ENSEMBLE
THEATRE
CINCINNATI**

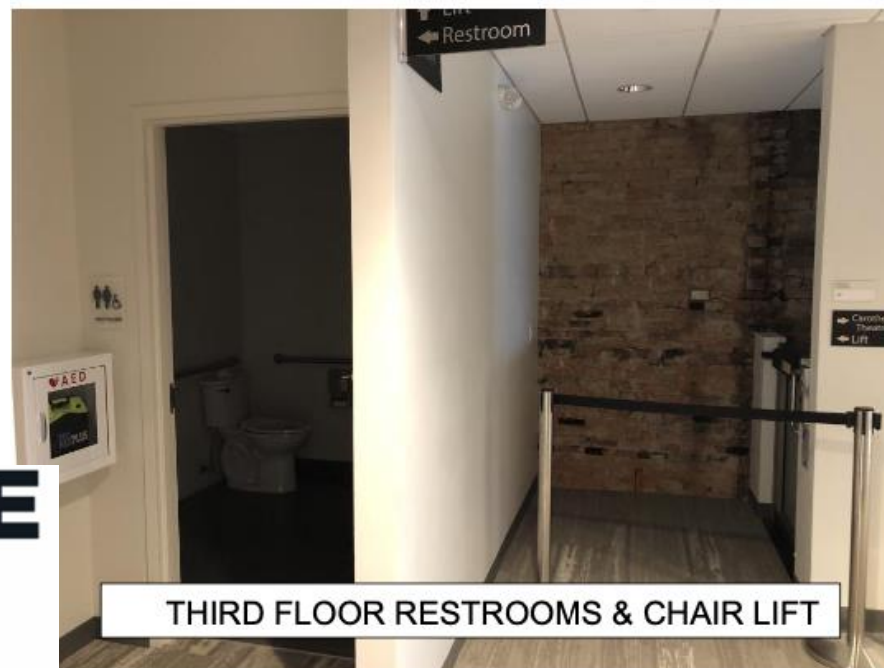
On the third floor, there is another entrance into the theatre. I can use this entrance if I want to enter from the top of the house.

There is an accessible restroom on the third floor.

There is a chair lift on the third floor, next to the entrance to the theatre.



THIRD FLOOR



THIRD FLOOR RESTROOMS & CHAIR LIFT



**ENSEMBLE
THEATRE
CINCINNATI**



On the second floor, there are two gender neutral restrooms.



**ENSEMBLE
THEATRE
CINCINNATI**

I will wait in the lobby until it is time for the play to begin.

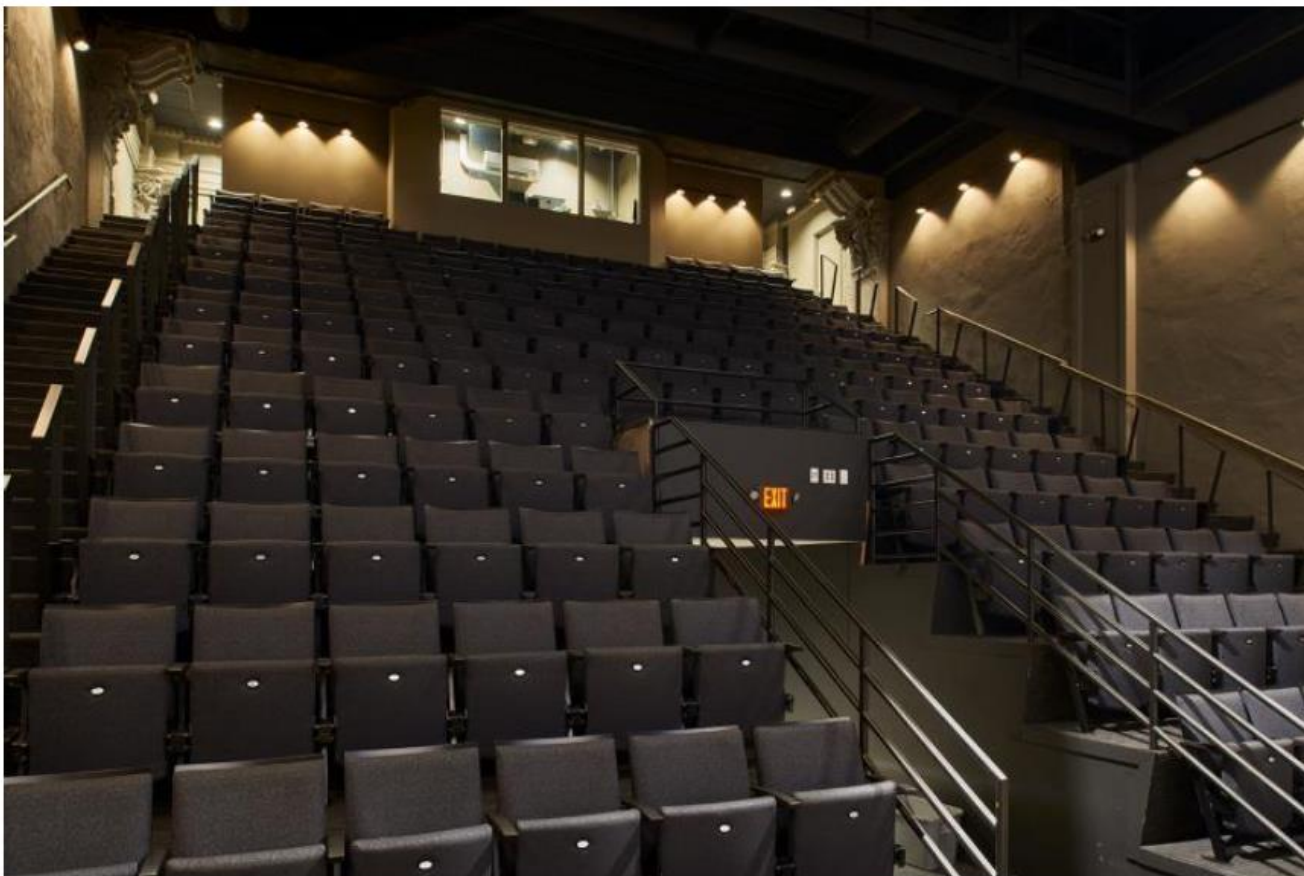
I will see people moving around before the show.

When I hear the bell, I will get in line to enter the theatre.

The theatre ushers will help me know where to go.



**ENSEMBLE
THEATRE
CINCINNATI**



INSIDE THE CAROTHERS THEATRE



**ENSEMBLE
THEATRE**
CINCINNATI

The Carothers Theatre has 180 seats.

An usher will help me find my seat.

This is my seat, where I will sit for the show.

There are many people who want to see the show.

During the show, if I need a break, I can exit the theatre at the back at the top. This exit will lead to the third-floor lobby.

I can leave at anytime if I need a break.

I may have to ask people to let me through the aisle. That is okay.



**ENSEMBLE
THEATRE
CINCINNATI**

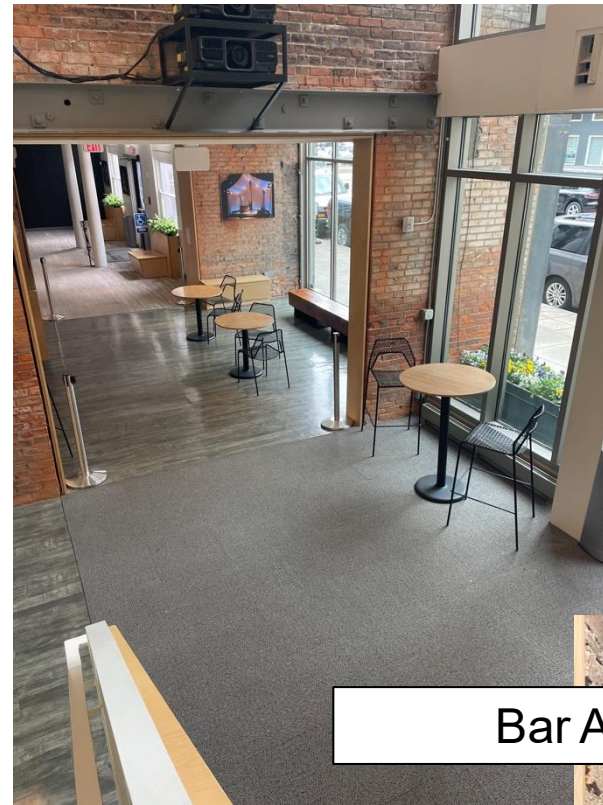


THIRD FLOOR EXIT

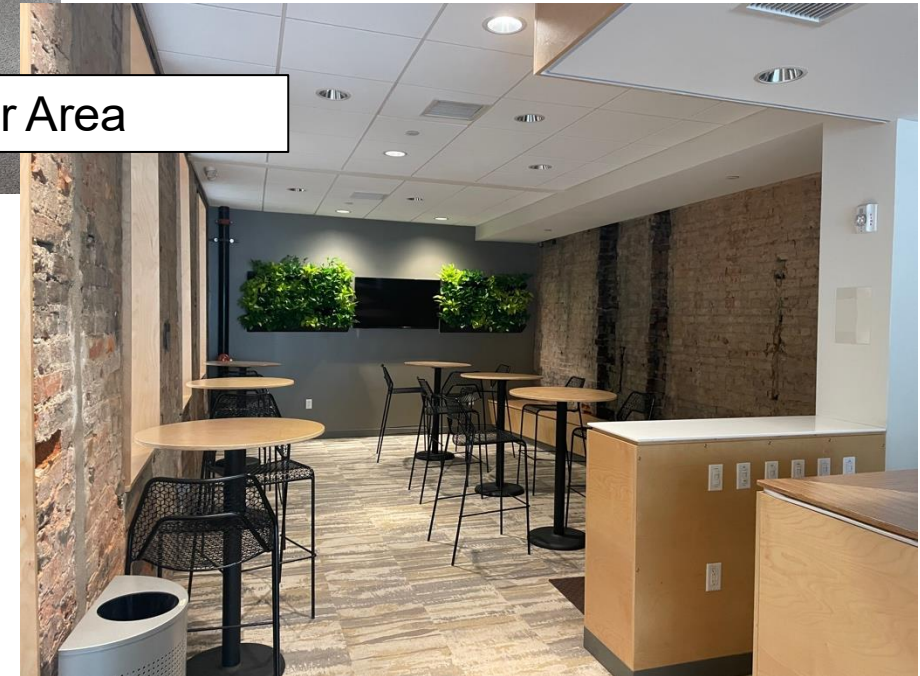
Sometimes there is an intermission. This is a break halfway through the play. When there is an intermission, I can go to the lobby to wait.

This is when I can go to the bathroom, get a drink of water, or go to the bar.

If I need to take a break and get some fresh air, this is where I can go.



Bar Area



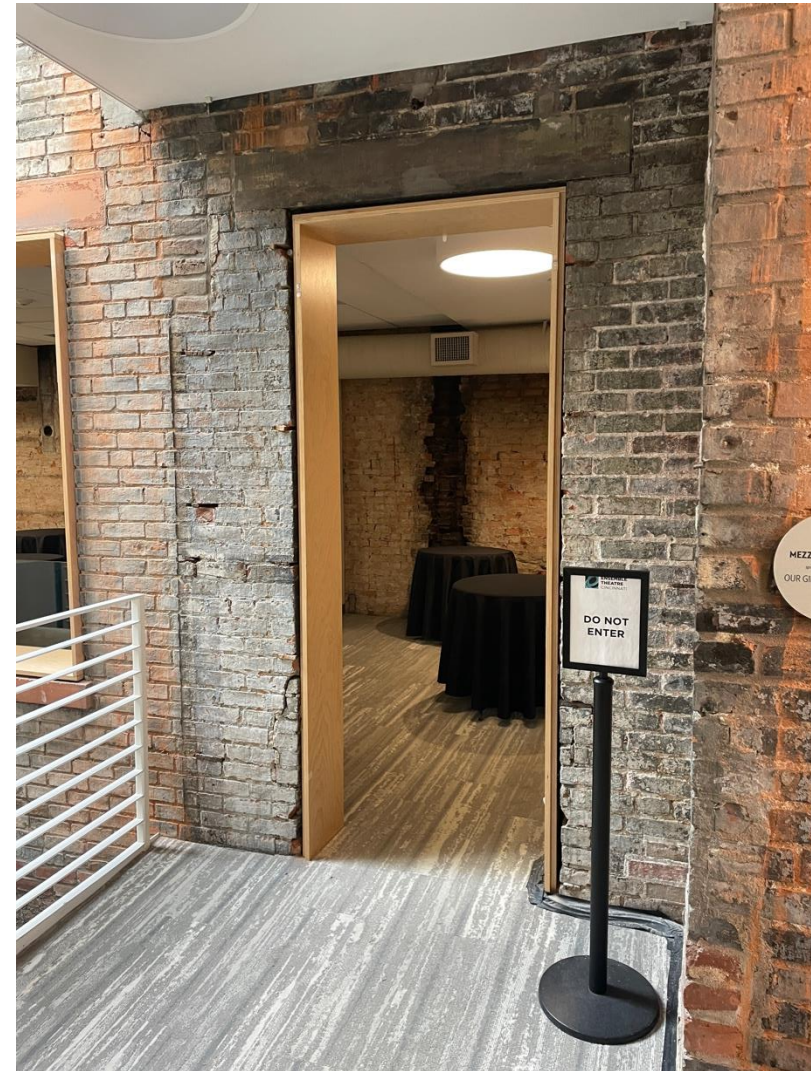
**ENSEMBLE
THEATRE
CINCINNATI**

If I need quiet time, I can go to the lobby outside of the theatre.

If I need absolute quiet time, I can go to the mezzanine.

The mezzanine will have chairs to sit on or I can walk around the lobby.

If I use the elevator to get to the mezzanine, I will hit the "M" button.



**ENSEMBLE
THEATRE
CINCINNATI**

At the end of the show, people clap to show how much they liked the show.

If I get overwhelmed by the clapping noise, I can cover my ears.

I can also snap my fingers or shake my hands to show the performers that I think they did a good job.



People Clapping



**ENSEMBLE
THEATRE
CINCINNATI**



Inside View of Front Doors

When it is time to leave, I will leave the theatre and go back into the lobby.

We will exit the same way we entered.

I did a great job seeing the show!



**ENSEMBLE
THEATRE
CINCINNATI**



Main Theatre Exit